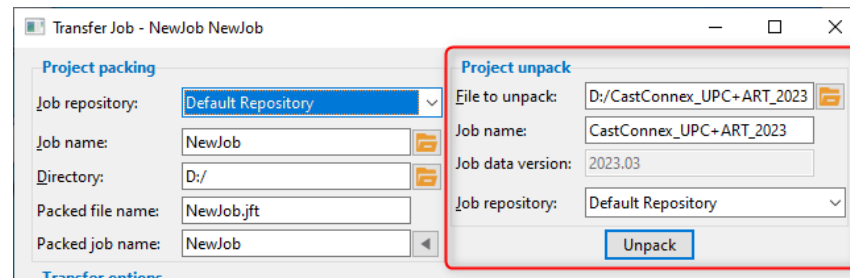
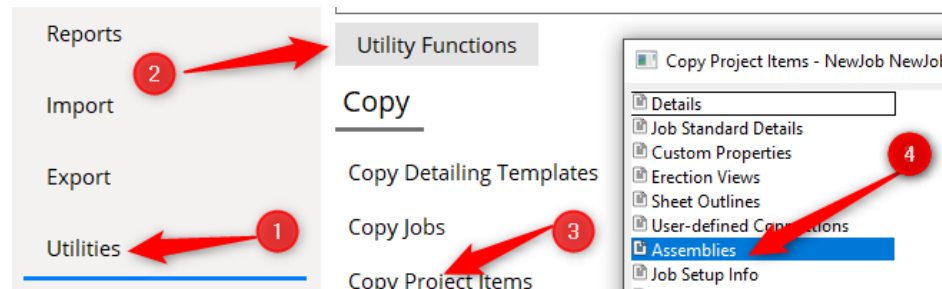


## CastConnex ART and UPC Connectors Install and first run

1. After you download the installer for the desired SDS2 version, make sure that the install is done under the SDS2 Data folder\plugins.
2. The application requires predefined assemblies that have to be imported from the reference mode in the working model.
  - 2.1. Download the reference model archive (.JFT file) and unpack it for the corresponding SDS2 version.



- 2.2. Copy the CastConnex assemblies you want to use from the reference model in your work one.



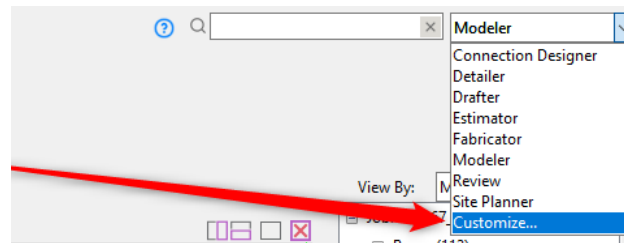
### 3. How to run the application:

- 3.1. You can find the tool by typing “CastConnex” in the search bar, and then click on “CastConnex ART UPC Connectors”.

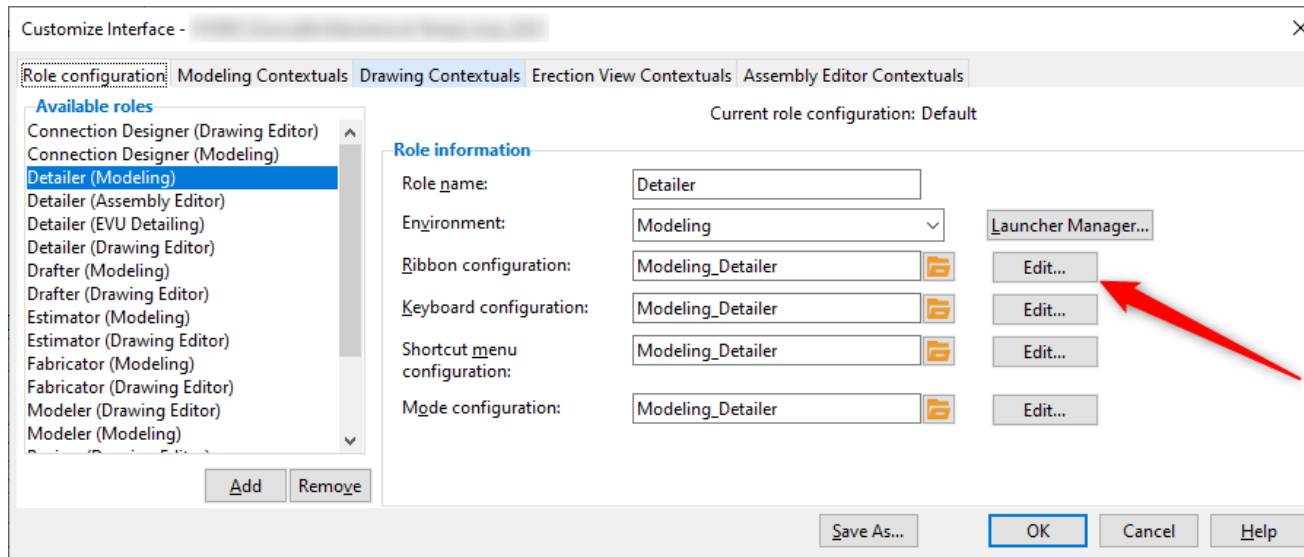


- 3.2. You can add a button for the application by editing your ribbon configuration

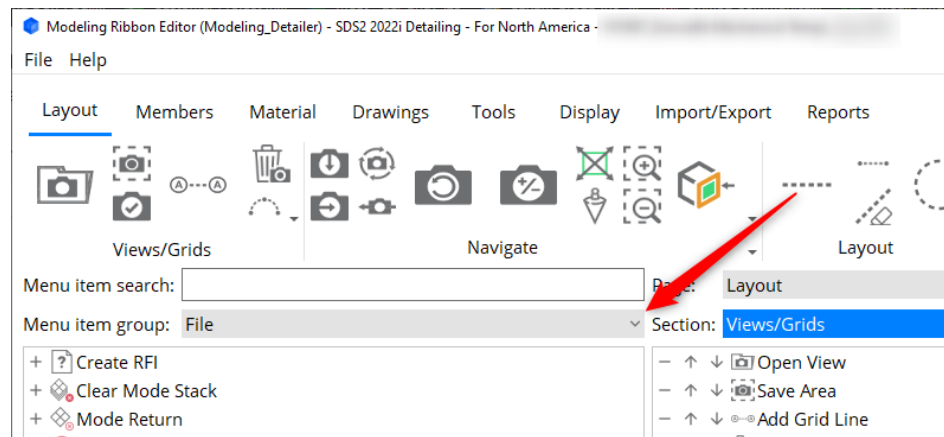
- 3.2.1. Open the customize interface window



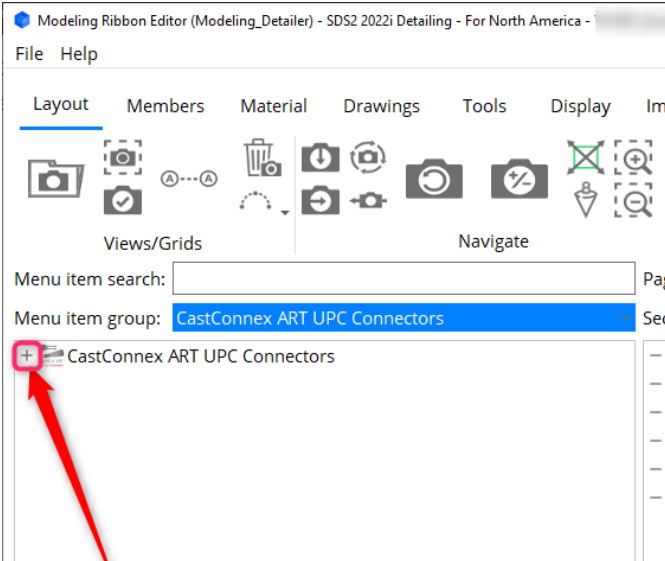
- 3.2.2. Select the configuration you are currently using and open the the Ribbon Editor window



3.2.3. Search and select “CastConnex ART UPC Connectors” in the “Menu item group” dropdown:



3.2.4. Add “CastConnex ART UPC Connectors” button to the desired page/section of your ribbon configuration



3.2.5. Now you can use the application from the button you’ve added to your Ribbon configuration